

FULL CATALOGUE



zuri.media
BRAND COMMUNICATION & PR





TABLE OF CONTENTS

Head Wear	3
T-shirts	24
Track Suits	44
Office Wear	48
Work Wear	65
Drink Ware	95
Exhibition Supplies	140



zuri.media
BRAND COMMUNICATION & PR

Head Wear

Botswana | Namibia | Zimbabwe

#vrzmb



CORPORATE WEAR

Jackson Fedora Hat

100% polyester | narrow curved soft brim
indented crown with pinched sides
attached elasticated black band
sweatband

N\$ 150



CORPORATE WEAR

Memphis Cap - 5 Panel

155g/m² | cotton twill | 5 panel structured peak
4 embroidered eyelets | self-fabric velcro closure

N\$ 150



CORPORATE **WEAR**

Championship Cap - 6 Panel

100% polyester, micro fibre peachskin | 6-panel
structured peak | 4 rows of stitching | contrast
reflective detail | contrast reflective detail
contrast reflective binding on peak | 6
embroidered eyelets | self-fabric velcro closure

N\$ 160



CORPORATE **WEAR**

Basic Sun Visor

130g/m² | 100% polyester twill | 6 rows of stitching |
self-fabric velcro closure

N\$ 160



CORPORATE WEAR

Nebraska Acrylic Beanie

acrylic cable rib knit

N\$ 170



SEVEN
DEVELOPMENTS

 **adestra**

amaris

CORPORATE WEAR

Colorado Acrylic Beanie

acrylic rib knit

N\$ 180



CORPORATE WEAR

Soho Cap - 6 Panel

45g/m² | microfibre | 6-panel structured peak
6 embroidered eyelets | self-fabric velcro closure

N\$ 180

CORPORATE WEAR

Cincinnati Cap - 6 Panel

70g/m² | acrylic | 6-panel structured peak
6 embroidered eyelets | self-fabric velcro closure

N\$ 180



CORPORATE **WEAR**

Trucker Cap - 5 Panel

255g/m² | heavy brushed cotton, polyester mesh
5 panel structured peak | 6 rows of stitching
classic mesh back | plastic snap closure

N\$ 180



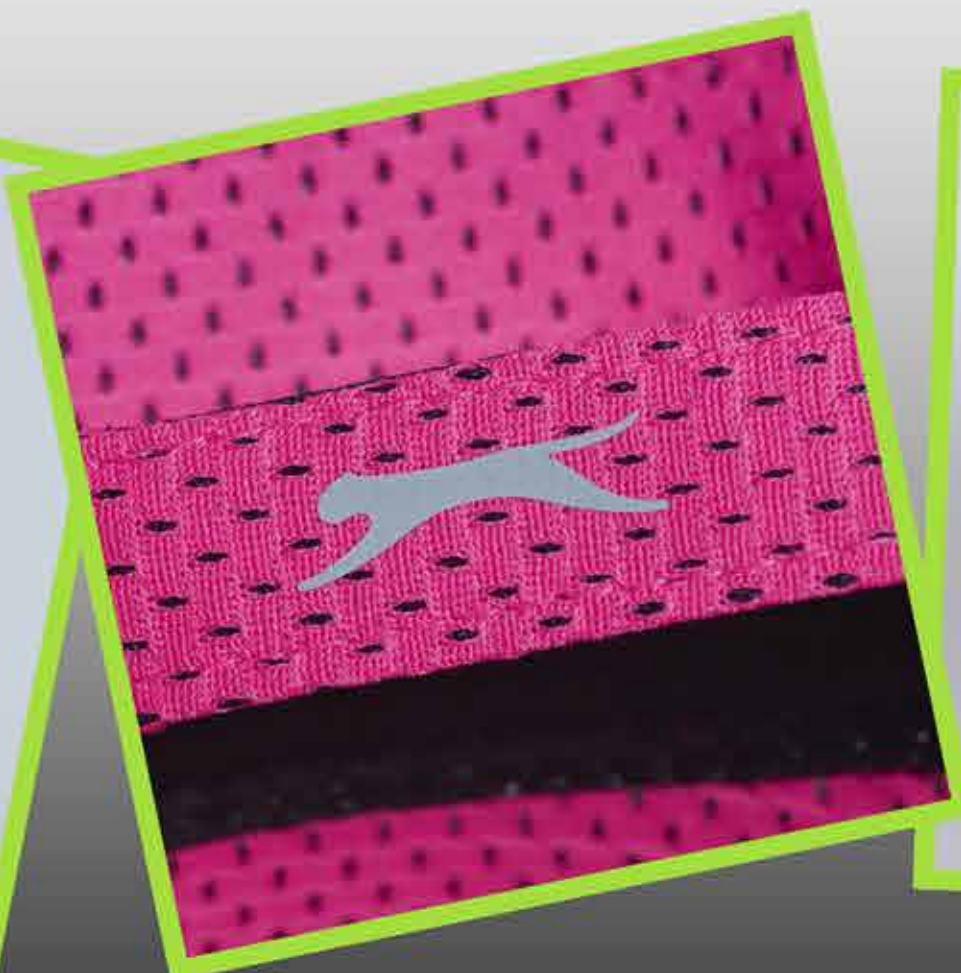


CORPORATE WEAR

Helios Sun Visor

185g/m2 | 100% polyester | curved structured peak
6 rows of stitching | adjustable velcro closure with
reflective Slazenger logo

N\$ 190



CORPORATE WEAR

Bailey Floppy Hat

Ensuring you are always protected from the harsh sunrays, no day will be too hot for you in this floppy hat. | 255g/m2 | 100% heavy brushed cotton | unstructured | metal eyelets | contrast sandwich brim

N\$ 200



zuri.media
BRAND COMMUNICATION & PR

CORPORATE WEAR

Molopo Bucket Hat

95g/m2 | 100% polyester
unstructured | adjustable toggle
self colour under brim

N\$ 200





CORPORATE **WEAR**

Bronx Cap - 6 Panel

250g/m² | 100% heavy brushed cotton | 6-panel
structured peak | 6 embroidered eyelets | self-
fabric velcro closure

N\$ 210

CORPORATE **WEAR**

Okiyo Sugoi Recycled Cap - 6 Panel

80g/m² | 100% RPET polyester | 6-panel curved
structured peak | 6 rows of stitching | 6
embroidered eyelets | printed inner tape
elasticated adjustable velcro closure

N\$ 240



zuri.media
BRAND COMMUNICATION & PR

CORPORATE WEAR

Deuce Cap - 6 Panel

77g/m2 | 100% polyester melange | 6-panel
structured peak | 6 rows of stitching | 4
embroidered eyelets | adjustable velcro closure
reflective Slazenger logo on the velcro closure

N\$ 250



zuri.media
BRAND COMMUNICATION & PR

CORPORATE WEAR

Relay Cap - 6 Panel

60g/m2 | 100% polyester peachskin | 6-panel
structured peak | 6 rows of stitching | 4
embroidered eyelets | laser cut side panels |
adjustable velcro closure | reflective Slazenger logo
on the velcro closure

N\$ 250



CORPORATE WEAR

Willow Bush Hat

175g/m2 | 100% cotton twill
unstructured | metal eyelets
brass studs | self-fabric cord

N\$ 270





CORPORATE WEAR

Sondela 6 Panel Oilskin cap

360g/m² | 100% cotton canvas | 6-panel curved
structured peak | 6 rows of stitching | 6
embroidered eyelets | adjustable closure with
metal clasp | embossed logo on metal closure

N\$ 280

CORPORATE WEAR

Performance Cap - 6 Panel

110g/m2 | performance polyester | 6-panel
structured peak | 6 embroidered eyelets | self-
fabric velcro closure

N\$ 300



zuri.media
BRAND COMMUNICATION & PR

CORPORATE **WEAR**

Alex Varga Malta Seamless Cap

100% polyester | 320g/m² | seamless construction
fitted cap with elasticated sweatband | Alex Varga
silicone logo

N\$ 380



zuri.media
BRAND COMMUNICATION & PR

CORPORATE WEAR

Somabula Oilskin Hat

360g/m2 | 100% cotton canvas
unstructured wide brim | 8 rows of stitching
2 brass studs | adjustable cord with toggle

N\$ 420

#vrzmb

T-Shirts

Casual Wear

Botswana | Namibia | Zimbabwe



zuri.media
BRAND COMMUNICATION & PR



www.zurimedia.com.na

CORPORATE WEAR

Unisex ActivUnisex Recycled Promo T-Shirt

145g/m² | 60% cotton, 40% polyester | short
sleeve | ribbed crew neck | ladies - relaxed
fit | men - standard fit

N\$ 190



CORPORATE WEAR

Unisex Super Club 135 T-Shirt

S - 4XL | 135 g/m² / 100% cotton single jersey knit | Rib-knit collar with double stitching | Self-fabric neck tape | bulk packed, 10 per polybag

N\$ 240



zuri.media
BRAND COMMUNICATION & PR

CORPORATE WEAR

Michigan Melange V-Neck T-Shirt

145 g/m² | 65% polyester, 35% cotton
single jersey knit | short sleeve | ribbed
v-neck | standard fit | bulk packed, 10
per polybag

N\$ 275



CORPORATE WEAR

Oregon Melange T-Shirt

160g/m2 | 100% dri fit melange
polyester | short sleeve • ribbed crew
neck | 1/2 chest (cm) | standard fit
can be downsized | bulk packed, 10
per polybag

N\$ 290



CORPORATE WEAR

Long Sleeve All Star T-Shirt

160g/m2 | 100% polyester birdeye | long
sleeve • self-fabric crew neck | 1/2 chest (cm)
standard fit | can be downsized | bulk
packed, 10 per polybag

N\$ 360



zuri.media
BRAND COMMUNICATION & PR

CORPORATE WEAR

Slazenger Endurance T-Shirt

140g/m² | 100% polyester | short sleeve | self-fabric crew neck | panelled raglan sleeves
reflective detail at back and shoulders
moisture-wicking and anti-bacterial finish
reflective Slazenger logo at bottom hem
side slits

N\$ 445



zuri.media
BRAND COMMUNICATION & PR

CORPORATE WEAR

Unisex Activ T-shirt

110g/m2 | 100% polyester, single jersey
knit | short sleeve | self-fabric crew
neck | Ladies - relaxed fit | Men -
standard fit

N\$ 235



zuri.media
BRAND COMMUNICATION & PR

CORPORATE WEAR

Orion Golf Shirt

100% polyester | 165g/m2
waffle knit | contrast tipping at knitted collar
cuffs | contrast inner placket
three button placket | side slits
standard fit

N\$ 380

CORPORATE WEAR

Everyday Golf Shirt

165g/m2 | 100% polyester | pique knit
easy-care fabric | knitted collar and
cuffs | two-button placket | 1/2 chest
(cm) | standard fit | item can be
downsized

N\$ 280



zuri.media
BRAND COMMUNICATION & PR

CORPORATE WEAR

Basic Pique Golf Shirt

175g/m²

65% polyester | 35% cotton pique knit
knitted two-ridge collar | three-button
placket | easy-care fabric
standard fit | can be downsized

N\$ 300



zuri.media
BRAND COMMUNICATION & PR

CORPORATE WEAR

APEX GOLF SHIRT

175g/m² | 65% polyester, 35% cotton,
pique knit | contrast front shoulder
insets and inner placket | knitted collar
| three-button placket
Orange (O) and Cyan (CY) with
charcoal base

N\$ 360



zuri.media
BRAND COMMUNICATION & PR

CORPORATE WEAR

Pro Golf Shirt

145g/m2

100% polyester | techno-dri
moisture management fabric
knitted collar three-button placket
easy-care fabric

N\$ 420



CORPORATE WEAR

Caliber Golf Shirt

weight 180g/m² | fabric 65% cotton, 35% polyester
single jersey knit | trendy contrast welt pocket | contrast peep out on sleeve
contrast knitted collar and neck binding | three button placket | easy care fabric | item can be downsized | standard fit



N\$ 422



CORPORATE WEAR

Championship Golf Shirt

145g/m2 | 100% polyester
techno-dri | moisture management fabric
knitted collar | three-button placket
contrast panel detail at sleeves and sides
white (W) with black trim
standard fit

N\$ 460



CORPORATE WEAR

Boston Golf Shirt

180 g/m² | all colours except charcoal:
100% combed cotton piqué knit
charcoal only: 65% polyester , 35% cotton
knitted collar | two tortoise shell button
placket

N\$ 460



CORPORATE WEAR

Santorini Golf Shirt

170g/m2 | 95% polyester
5% spandex | raglan sleeves feature an
edgy step-and-repeat emboss detail
easy-care fabric | self-fabric collar
three-button placket | standard fit

N\$ 530



zuri.media
BRAND COMMUNICATION & PR



CORPORATE WEAR

Motif Golf Shirt

160gsm2

95% polyester, 5% spandex

moisture wicking and anti-bacterial finish

unique tonal pattern design

two-piece self-fabric collar with contrast detail

three button placket

reflective Slazenger logo at bottom hem

N\$ 580



zuri.media
BRAND COMMUNICATION & PR

CORPORATE WEAR

Men Dakota Golf Shirt

160g/m2 | 100% polyester
cool comfort textured fabric | shaded
sublimation design | contrast inner placket
knitted collar and cuffs | three button placket
side slits

N\$ 600



CORPORATE WEAR

Glendower Golf Shirt

160g/m² | 100% polyester
moisture-wicking and anti-bacterial finish
two-piece self-fabric collar
mesh contrast side and back panel
three-button placket
reflective Slazenger logo at bottom hem

N\$ 610



zuri.media
BRAND COMMUNICATION & PR

Track Suits

Botswana | Namibia | Zimbabwe



zuri.media

BRAND COMMUNICATION & PR

www.zurimedia.com.na

vrzmb





CORPORATE WEAR

Unisex Slazenger Performance Tracksuit

230g/m2 100% polyester, satin sports
knit

N\$ 1400



zuri.media
BRAND COMMUNICATION & PR



CORPORATE WEAR

Unisex Sideline Tracksuit

230g/m²

100% polyester, trilobal sports knit

N\$ 1057



zuri.media
BRAND COMMUNICATION & PR



CORPORATE WEAR

Unisex Championship Tracksuit

200g/m2 | 100% polyester sport knit
elasticated waistband with inner drawcord
contrast detail at underarms and sides
long sleeve top with rib cuffs
tapered legs | 1/2 hip (cm) | standard fit

N\$ 1120



zuri.media
BRAND COMMUNICATION & PR

Office Wear

Shirts | Trousers

Botswana | Namibia | Zimbabwe

www.zurimedia.com.na



zuri.media
BRAND COMMUNICATION & PR

CORPORATE WEAR

Short Sleeve Kensington Shirt

S - 4XL • 105 g/m² • 65%

polyester, 35%
cotton poplin

N\$ 520



CORPORATE WEAR

Short Sleeve Empire Shirt

S - 4XL • 105 g/m² • 65% polyester, 35%
cotton poplin

N\$ 520



zuri.media
BRAND COMMUNICATION & PR

CORPORATE WEAR

Ladies Short Sleeve Ava Blouse

100g/m² | 100% polyester
mandarin collar | concealed placket
down centre front | bust darts

N\$ 580

CORPORATE WEAR

Ladies Long Sleeve Zenobia Blouse

100g/m² | 100% polyester mandarin collar with
two pleats double placket down centre front
keyhole and pleat detail at cuff with one
button | back yoke with box pleat



N\$ 600



zuri.media
BRAND COMMUNICATION & PR

CORPORATE WEAR

Mens Short Sleeve Ashford Shirt

105g/m² | 60% polyester, 40% cotton
Classic mini check fabric Button-down
collar | Back yoke with shoulder pleats
Curved hem



N\$ 640

CORPORATE WEAR

Long Sleeve Sheffield Stretch Shirt

115g/m² | 80% polyester, 17% cotton, 3%
spandex | Lightweight stretch fabric
ensures comfort and ease of
movement | Button-down collar
Adjustable two-button cuff | Back yoke
with shoulder pleats | Curved hem



N\$ 650

CORPORATE WEAR

Short Sleeve Serengeti 2-Tone Bush Shirt

160g/m² | 100% brushed cotton twill | Box pleated pockets with button-down flap | Front and back contrast yoke | Back yoke has a box pleat | Metal buttons | Twin needle finishing at seams for extra strength and durability

N\$ 680



zuri.media
BRAND COMMUNICATION & PR

CORPORATE WEAR

Long Sleeve Northampton Shirt

110g/m2 | 65% polyester, 35% cotton, yarn-dyed
stripe | Adjustable cuffs

N\$ 690

www.zurimedia.com.na



CORPORATE WEAR

Mens Cargo Zip Off Pants

245g/m² | 65% polyester, 35% cotton, sanded twill |
Cargo pockets | Side entry pockets | Back pockets
with button-down flap | Buttons on all pockets are
concealed | Half leg bermuda zip-off | Inner
drawstring

N\$ 700

CORPORATE WEAR

Long Sleeve Wildstone Shir t

150g/m2 | 100% cotton twill | front and back yoke
two pleated chest pockets with button flap | metal
buttons

N\$ 740



CORPORATE WEAR

Ladies 3/4 Sleeve Micro Check Shirt

105 g/m² | 50% cotton, 50% polyester, 5% elastane
yarn dyed fabric | 3/4 cuffed sleeves with side slits
tone-on-tone buttons | curved hemline

N\$ 790



zuri.media
BRAND COMMUNICATION & PR



CORPORATE WEAR

Cast Premium 100% Cotton Denim Pants

100% cotton, 12oz denim | elasticated back waist •
five belt loops • two slanted front pockets • back
pocket contrast triple needle top stitching • bar
tacks at stress points | Manufactured in the SADC
Region YKK Zip

N\$ 583



zuri.media
BRAND COMMUNICATION & PR

CORPORATE WEAR

Ladies Long Sleeve Ava Blouse

100g/m² | 100% polyester | mandarin collar
placket down centre front | bust darts
keyhole and pleat detail at cuff with one
button

N\$ 590



zuri.media
BRAND COMMUNICATION & PR

CORPORATE WEAR

Long Sleeve Eastwood Shirt

5.2oz | 100% cotton, cross-hatch denim | two front pockets | back yoke with two knife pleats

N\$ 850

CORPORATE WEAR

Long Sleeve Alex Varga Hallstatt Shirt

120g/m² | 88% polyester, 12% modal | Ultra soft and luxurious modal blend fabric with eco-friendly properties | Sleek and modern design | Adjustable two-button cuff | Engraved buttons | Back yoke Curved hem | Alex Varga silicone logo

N\$ 950



zuri.media
BRAND COMMUNICATION & PR



CORPORATE WEAR

Mens Cargo Pants

245g/m² | 65% polyester, 35% cotton, sanded twill
side cargo pockets | back pockets with button-
down flap | slanted side pockets | self-fabric belt
loops | back darts

N\$ 600

#v

WorkWear

HiViz | Worksuits | Hospitality
& more

Botswana | Namibia | Zimbabwe

www.zurimedia.com.na



zuri.media
BRAND COMMUNICATION & PR

CORPORATE WEAR

Altitude Guard Basic Hi-Viz Reflective Bib

100g/m2 | 100% polyester Airtex mesh
contrast binding detail • adjustable ties • silver
20mm reflective tape detail | day/night visibility

N\$ 150



zuri.media
BRAND COMMUNICATION & PR

CORPORATE WEAR

Direction En4 Hi-Viz Reflective Full Zip Vest

120g/m2 | 100% polyester tricot | full-zip • contrast
binding detail • silver 50mm reflective tape detail
ID pouch on left chest • EN4 certified | day/night
visibility

N\$ 230



CORPORATE WEAR

Inspector Two-Tone Hi-Viz Golf Shirt

160g/m2 | 100% polyester birdseye | contrast knitted collar | two-tone front panel | solid colour back panel | sewn on pocket

N\$ 380





CORPORATE WEAR

Artisan Premium 100% Cotton Pants - Reflective Legs - Orange Tape

200g/m² | 100% cotton twill | elasticated back waist
five belt loops • two slanted front pockets • back
pocket | triple needle top stitching • bar tacks at
stress points | orange/silver 50mm reflective tape
detail on legs | Locally Manufactured | YKK Zip
day/night visibility

N\$ 400



zuri.media
BRAND COMMUNICATION & PR



CORPORATE WEAR

Supervisor Premium Cargo Reflective Pants fic Premium Two-Tone Hi-Viz Reflective Jacket

240g/m² 100% J54 cotton twill | YKK zip • self-fabric
waist with seven belt loops • cargo pockets with
velcro closure flap | side entry front pockets • back
pockets with velcro closure flap • back darts | silver
50mm reflective tape detail • top stitching detail •
bar tacks at stress points | Locally Manufactured
YKK Zip

N\$ 450



CORPORATE WEAR

Traffic Premium Two-Tone Hi-Viz Reflective Pants

235g/m² | 65% polyester, 35% cotton twill • contrast panels: 50% cotton, 50% polyester interwoven fabric
contrast panels at mid leg • elasticated back waist • five belt loops • concealed YKK zip | two slanted front pockets • back pocket • silver 50mm reflective tape detail | triple needle top stitching • bar tacks at stress points | locally manufactured | day/night visibility

N\$ 450



zuri.media
BRAND COMMUNICATION & P

CORPORATE WEAR

Surveyor Two-Tone Hi-Viz Reflective Golf Shirt

160g/m2 | 100% polyester birdseye | contrast knitted collar • two-tone front and back panel • silver 50mm reflective tape detail | day/night visibility | easy-care

N\$ 490



CORPORATE WEAR

Site Premium Polycotton Jacket - Reflective Arms & Back - Orange Tape

235g/m2 | 65% polyester, 35% cotton twill
open neck collar • front yoke panel • concealed zip
chest pocket features V-flap with press stud closure
and pen pocket | two side pockets • triple needle
top stitching • bar tacks at stress points
orange/silver 50mm reflective tape detail on arms
and back | Locally Manufactured | YKK Zip day/night
visibility

N\$ 500



zuri.media
BRAND COMMUNICATION & PR

CORPORATE WEAR

Traffic Premium Two-Tone Hi-Viz Reflective Jacket

235g/m2 | 65% polyester, 35% cotton twill • contrast panels: 50% cotton, 50% polyester interwoven fabric front and back contrast panels • open neck collar • front yoke panel • concealed YKK zip with single press stud | chest pocket features V-flap with press stud closure and pen pocket | two front pockets • silver 50mm reflective tape detail • triple needle top stitching • bar tacks at stress points | locally manufactured | day/night visibility

N\$ 530



zuri.media
BRAND COMMUNICATION & PR

CORPORATE WEAR

Hazard Padded Two-Tone Hi-Viz Reflective Jacket

100% polyester, 210D Oxford with milky coating, padded and lined in quilted Taffeta | Two-tone jacket with silver 50mm reflective tape detail • concealed zip features storm flap with press stud closure | inner pockets • eyelets under arms • concealed hood with drawcord and toggles open-end sleeve with knitted inner cuff • welt pockets with velcro closure flap • taped seams breathable | rainproof

N\$ 1200



zuri.media
BRAND COMMUNICATION & PR

CORPORATE WEAR

Long Sleeve Surveyor Two-Tone Hi-Viz Golf Shirt

160g/m | 100% polyester birdseye | contrast
knitted collar | two-tone front and back
panel | silver 50mm reflective tape detail

N\$ 530



zuri.media
BRAND COMMUNICATION & PR

CORPORATE WEAR

Alaris Padded Jacket

100% oxford nylon | fully padded quilted inner open end sleeves | two bottom patch pockets with press stud closure flap | shoulder epaulettes with press studs | water resistant | wind resistant | standard fit

N\$ 800



zuri.media
BRAND COMMUNICATION & PR

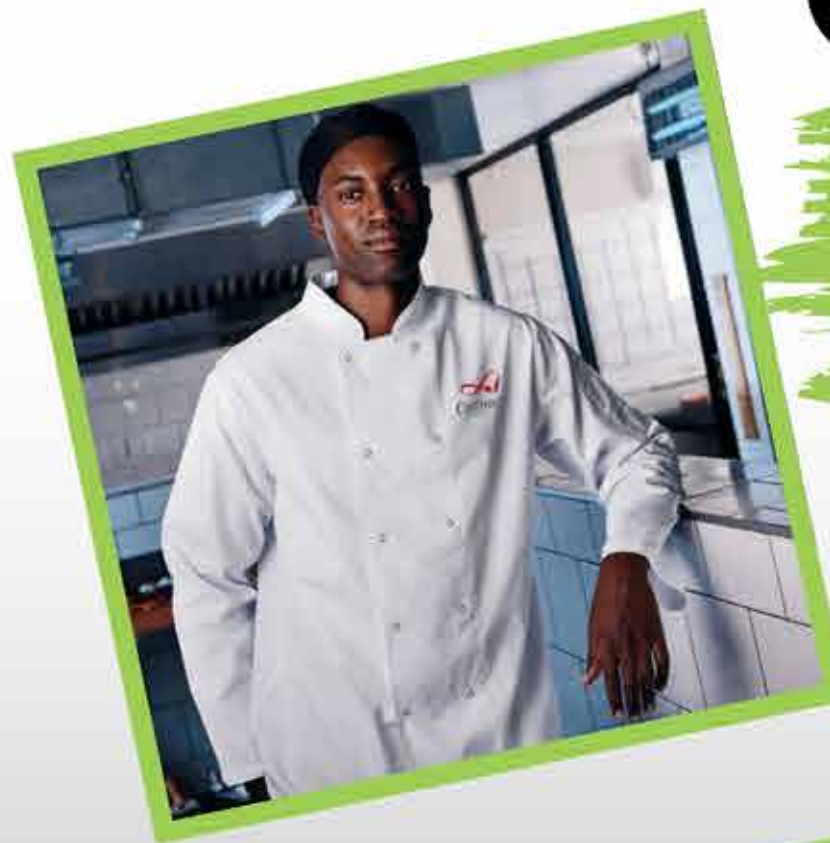
CORPORATE WEAR

Foundation Hi-Viz Padded Jacket

100% polyester | two-tone jacket with silver 50mm reflective tape detail | chunky zip | dual pockets with welted velcro closure flap | elasticated cuffs and waist | ID pocket on right chest

N\$ 1300





CORPORATE WEAR

Avallon Chef Beanie

195g/m² | 65% polyester, 35% cotton | expandable
elastic back

N\$ 206



zuri.media
BRAND COMMUNICATION & PR

CORPORATE WEAR

Promo Waiters Apron

Brand your logo or message and serve it up in style at any event with this promo waiters apron which has been manufactured from a heavyweight fabric perfect for all occasions.

N\$ 230



zuri.media
BRAND COMMUNICATION & PR



CORPORATE WEAR

Unisex Slater Apron

210g/m2 | polycotton twill | full-size apron with back ties | 2 x front open pockets
chest: 28cm | width: 69 cm | length: 97cm
DTC may not be done in 1 colour

N\$ 300

CORPORATE WEAR

Crew Waiters Apron

6oz | 100% cotton | classic waiters apron
double front pockets secured with metal rivets

N\$ 317





CORPORATE WEAR

Okiyo Gohan Cotton Apron

chest: 86 (l) x 26.5 (w) cm
100% cotton | 240g/m² cotton
two front pockets with Okiyo side winder
back ties | locally manufactured | bulk packed

N\$ 350

CORPORATE WEAR

Marriot Polycotton Housecoat

190g/m | polycotton twill | open neck collar | 5 button closure | mitered chest pocket | two bottom pockets | bust darts | garment features top stitching and bar tacks at stress points | closed back, longer length garment

N\$ 350



CORPORATE WEAR

Unisex Short Sleeve Cannes Utility Top

195g/m² | 65% polyester, 35% cotton
double breasted front panel with two press studs
thermometer sleeve pocket



N\$ 450

CORPORATE WEAR

Unisex Short Sleeve Zest Chef Jacket

Double breasted with press studs. Thermometer
sleeve pocket. Locally manufactured.
Sizes: Unisex: (XS - 5XL)

N\$ 500



zuri.media
BRAND COMMUNICATION & PR

CORPORATE WEAR

Unisex Long Sleeve Zest Chef Jacket

double breasted with press studs | thermometer
sleeve pocket | locally manufactured

N\$ 530

CORPORATE WEAR

Unisex Long Sleeve Toulon Chef Jacket

195g/m² | 65% polyester, 35% cotton
contrast collar and inner cuff | double-breasted
chest pocket | thermometer sleeve pocket

N\$ 570

CORPORATE WEAR

Unisex Long Sleeve Dijon Chef Jacket

195g/m² | 65% polyester, 35% cotton
contrast piping at collar, front panel and cuff
double breasted | thermometer sleeve pocket

N\$ 610

CORPORATE WEAR

Alex Varga Zenith Golf Shirt

145g/m2 | 100% cool-fit polyester, moisture-wicking and anti-bacterial finish | unique laser-cut design at collar and sleeves | seamless finish at self-fabric collar and sleeves | three-button press stud placket with contrast detail | Alex Varga silicone logo

N\$ 740



zuri.media
BRAND COMMUNICATION & PR

CORPORATE WEAR

Masters Golf Shirt

165g/m2 | 100% cool-fit polyester, moisture-wicking, and anti-bacterial finish
unique sublimated stripe design front panel
angled dropped shoulder | two-piece self-fabric collar | two-button placket

N\$ 740



zuri.media
BRAND COMMUNICATION & PR

CORPORATE WEAR

Alex Varga Skylla Golf Shirt

180gsm2 | 96% nylon, 4% spandex,
jacquard knit | luxurious bubble surface interest
moisture wicking and anti-bacterial finish
slim self-fabric collar | two button placket
side slits | Alex Varga silicone logo

N\$ 880



zuri.media
BRAND COMMUNICATION & PR

CORPORATE WEAR

Caliber Golf Shirt

Weight 180g/m² | fabric 65% cotton, 35% polyester
single jersey knit | trendy contrast welt pocket
contrast peep out on sleeve | contrast knitted collar
and neck binding | three button placket | easy care
fabric | item can be downsized | standard fit

N\$ 422



Branding Techniques

Offering a choice of 23 branding techniques and the ability to combine multiple methods and locations on the same item, we're here to ensure a world-class experience when it comes to projecting the right image for your brand.

Our industry-leading turnaround times, vast capacity across all departments and an in-depth understanding of the complexity of branding provides you with the convenience and cost-savings associated with purchasing and branding product at one point.

Branding Pricing

Prices include single-position embroidery branding. Other options and colour options are available on request and will be added to an official quote

Lead Times

All orders are subject to a 10 - 14 working days delivery time from receipt of payment on orders. All artwork is required in high-quality vector





zuri.media
BRAND COMMUNICATION & PR

DRINKWARE CATALOGUE

WWW.ZURIMEDIA.COM.NA

COFFEE MUGS

**DIASY CERAMIC
COFFEE MUG -
325ML**

9.8 (h) | 330ml ceramic
mug bulk packed

N\$60



COFFEE MUGS

ALTITUDE SEATTLE
CERAMIC COFFEE
MUG - 325ML

325ml | 10.5 (h) | bulk
packed

N\$60



COFFEE MUGS

ALTITUDE ALTRA CERAMIC COFFEE MUG – 330ML

8.3 (h) x 8.2 (d) cm | ceramic | 330ml
matte surface with matching colour
glossy inner | dishwasher and microwave
safe | packaged in a gift box

N\$88



zuri.media
BRAND COMMUNICATION & PR

COFFEE MUGS

ALTITUDE VIDA
CERAMIC COFFEE
MUG – 350ML

9 (h) x 9 (d) cm | AB grade
ceramic | 350ml | rich, glossy finish
on both the outside and the inside
| packaged in a gift box

N\$110



COFFEE MUGS

ALTITUDE LAGUNA
PLASTIC DOUBLE-WALL
TUMBLER - 460ML

2l (h) | 0.46L | PP | bulk
packed



N\$130

COFFEE MUGS

KOOSHTY KALEIDO SUBLIMATION CERAMIC MUG - 320ML

10 (h) | 320ml | A-Grade
sublimation ceramic & silicone |
packaged in a natural kraft Kooshty
gift box

N\$110



COFFEE MUGS

ALTITUDE SORRENTO
CERAMIC COFFEE MUG
- 415ML

12 (h) | 415 ml | AB grade
ceramic | bulk packed |
packaged in a gift box



N\$137

COFFEE MUGS

DAISY TRANSITION
SUBLIMATION CERAMIC
COFFEE MUG - 325ML

12 (h) | 415 ml | AB grade
ceramic bulk packed |
packaged in a gift box

N\$140



COFFEE MUGS

SERENDIPIO VOGUE VICTORIA CERAMIC COFFEE MUG - 280ML

8.5 (h) cm | 280ml
ceramic | matte surface with
glossy off-white inner
dishwasher and microwave safe
packaged in a Serendipio grey gift
box

N\$150



COFFEE MUGS



ALEX VARGA ALETINA CERAMIC COFFEE MUG – 400ML

9 (h) cm | ceramic | 400ml | matte
surface with glossy inner | dishwasher
and microwave safe | Alex Varga logo
tone-on-tone underneath the mug |
packaged in an Alex Varga gift box



N\$154

COFFEE MUGS

SERENDIPIO DORSET CERAMIC COFFEE MUG – 400ML

10.3 (h) x 7.2 (d) cm |
ceramic 400ml | matte
surface with matching colour
glossy inner | dishwasher and
microwave safe packaged in
a grey Serendipio gift box

N\$158



zuri.media
BRAND COMMUNICATION & PR

COFFEE MUGS

SERENDIPIO SIENNA
CORK & CERAMIC
COFFEE MUG - 340ML

10.9 (h) | ceramic & cork | 340ml
not dishwasher and microwave
safe | packaged in a grey
Serendipio gift box



N\$170

COFFEE MUGS

SERENDIPIO MADISON
STAINLESS STEEL &
PLASTIC DOUBLE-WALL
TUMBLER - 350ML

11.5 (h) cm | stainless steel, PP, and
EVA | 350ml | stainless steel outer,
with pp inner & lid, and soft Eva
base | packaged in a grey
Serendipio gift box

N\$170



COFFEE MUGS

ALEX VARGA MARCELLA CERAMIC COFFEE MUG – 540ML

13.7 (h) cm | ceramic 540ml
matte surface with glossy inner
dishwasher and microwave safe

Alex Varga logo tone-on-tone
underneath the mug | packaged in
an Alex Varga gift box



N\$180

COFFEE MUGS

AC HAZYVIEW CERAMIC COFFEE MUG - 330ML

9 (d) x 9 (h) cm | stoneware
ceramic | 330ml | glossy gradient
colour outer with glossy cream
inner | dishwasher and microwave
safe | Andy Cartwright logo printed
under the base | packaged in an
Andy Cartwright gift box

N\$190



COFFEE MUGS

SERENDIPIO
SIENNACORK &
CERAMIC SUBLIMATION
COFFEE MUG - 340ML

10.9 (h) | ceramic & cork | 340ml
not dishwasher and microwave
safe | packaged in a grey
Serendipio gift box



N\$195

COFFEE MUGS

KOOSHTY MIXALOT BLACK MUG - 320ML

10 (h) cm | ceramic & silicone | 320ml
dishwasher safe | microwave safe | use
with care when consuming hot
beverages | do not use ceramic that is
chipped or cracked | packaged in a
Kooshty gift box



N\$140

COFFEE MUGS

**ALTITUDE MAGNA
STAINLESS STEEL &
PLASTIC DOUBLE-WALL
TUMBLER - 550ML**

17.5 (h) cm | stainless steel
and PP | 550ml | stainless
steel outer wall with PP inner |
packaged in a gift box



N\$170

COFFEE MUGS

ALTOS STAINLESS STEEL & PLASTIC DOUBLE- WALL MUG - 450ML

stainless steel & PP outer | PP liner
| 0.45L / 18.5 (h) | BPA free | 450ml
| not dishwasher and microwave
safe | packaged in a gift box



N\$170

COFFEE MUGS

SERENDIPPIO VOGUE
MADISON STAINLESS
STEEL & PLASTIC DOUBLE-
WALL TUMBLER - 350ML

11.5 (h) cm | 350ml | stainless
steel, PP, and EVA | stainless
steel outer, with PP inner & lid,
and soft Eva base | packaged in
a Serendipio grey gift box

N\$170



COFFEE MUGS

ALTITUDE DAYTONA
PLASTIC 2-IN-1 DOUBLE-
WALL TUMBLER &
STRAW - 600ML

18.6 (h) cm | pp | 600ml
double wall | packaged in
a gift box



N\$170



COFFEE MUGS

**KOOSHTY TYPHOON
STAINLESS STEEL &
PLASTIC DOUBLE-WALL
TUMBLER - 450ML**

7.5 (w) x 21.5 (h) cm | PP &
stainless steel | easy pop flip-top
lid | packaged in a natural kraft
Kooshty gift box

N\$190



COFFEE MUGS

KOOSHTY LUCA STAINLESS STEEL & PLASTIC DOUBLE- WALL TUMBLER – 350ML

14.5 (h) x 9 (d) cm | PP, stainless steel,
PU & nylon | 350ml | double-wall plastic &
stainless steel design | secure screw-on
lid | secure drinking port cap | EVA base
pad with Kooshty logo | packaged in a
natural kraft Kooshty gift box

N\$190



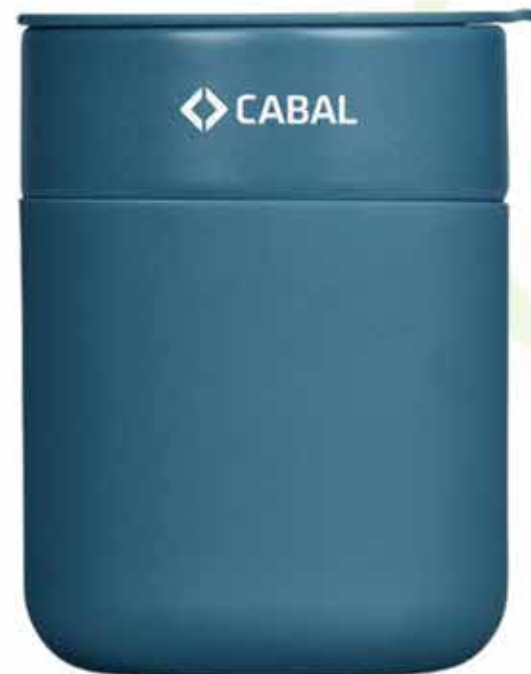
zuri.media
BRAND COMMUNICATION & PR

COFFEE MUGS

SERENDIPIO PIMLICO CERAMIC COFFEE TUMBLER – 300ML

10.5 (h) cm | ceramic, PP & silicone | 300ml
with slider press lid | insulating and
protective silicone sleeve | the tumbler and
sleeve are microwave and dishwasher safe,
but not the lid | packaged in a grey
Serendipio gift box

N\$195



COFFEE MUGS

SERENDIPIO METEOR STAINLESS STEEL & PLASTIC DOUBLE-WALL TUMBLER - 450ML

stainless steel outer | PP liner &
lid / 0.45L | 21.5 (h) | packaged
in a grey Serendipio gift box



N\$196



COFFEE MUGS

KOOSHTY SAMBA GLASS KUP – 340ML

13 (h) cm | borosilicate glass,
PP, silicone | 340ml | black lid
| matching silicone cap and
band | packaged in a Kooshty
gift box



Exhibition catalogue

Botswana | Namibia



COFFEE MUGS

**KOOSHTY ANGELO
STAINLESS STEEL &
PLASTIC DOUBLE-
WALL MUG – 360ML**

12.5 (h) x 8.8 (d) cm | PP & stainless
steel | 360ml | double-wall stainless
steel & plastic design | press-on lid
with slider closure | secure drinking
port cap | not dishwasher and
microwave safe | EVA base pad with



#vrzmb



COFFEE MUGS

SERENDIPIO BINARY
STAINLESS STEEL &
PLASTIC DOUBLE-WALL
TUMBLER - 450ML

0.45L | 21.5 (h) | packaged in
a grey Serendipio gift box

N\$211



COFFEE MUGS

ALTITUDE FLAVOURADE
PLASTIC INFUSER
BOTTLE - 1 LITRE

flip-up straw | dishwasher safe
only - bottle only, not the
trimmings | 1L | not dishwasher
and microwave safe

N\$211



COFFEE MUGS

KOOSHTY CONCORDE STAINLESS STEEL & PLASTIC DOUBLE-WALL TUMBLER & STRAW - 720ML

21.3 (h) x 8.5 (d) (excluding straw length) stainless steel & PP | 720ml double-wall stainless steel & plastic design | secure screw-on lid | cup holder-friendly base | powder-coated finish | includes a reusable plastic straw | ensure the lid is securely closed and tightened when using | not dishwasher safe | not microwave safe | EVA base pad with Kooshty logo | packaged in a natural kraft Kooshty gift box

N\$217



COFFEE MUGS

**SERENDIPIO FIRE &
ICE STAINLESS STEEL
& PLASTIC 2-IN-1
TUMBLER - 435ML**

drink it hot or cold | 2 lid options
screw on with slide spout and
straw in | spill-proof | packaged
in a grey Serendipio gift box

N\$230



COFFEE MUGS

SERENDIPIO MONOCLE COFFEE PLUNGER – 350ML

17 (h) x 12.5 (d) cm | steel, plastic
& borosilicate glass | 350ml
removable carafe is dishwasher
safe | not microwave safe
packaged in a grey Serendipio
gift box

N\$230



COFFEE MUGS

CONSULATE STAINLESS STEEL VACUUM FLASK - 500ML

500ml | BPA free | not
dishwasher and microwave
safe | packaged in a gift box

N\$250



COFFEE MUGS

ALTITUDE ALPACA
STAINLESS STEEL
VACUUM FLASK – 500ML

24.5 (h) x 6.9 (d) cm | stainless
steel & PP | 500ml | stainless steel
vacuum construction keeps liquids
hot or cold for hours | not
dishwasher and microwave safe |
packaged in a gift box



N\$270

COFFEE MUGS

KOOSHTY CALDOS STAINLESS STEEL VACUUM TUMBLER – 380ML

14.5 (h) x 9 (d) cm | stainless steel & PP
380ml | stainless steel vacuum
construction keeps liquids hot or cold for
hours | secure screw-on lid | secure
drinking port cap | not dishwasher and
microwave safe | EVA base pad with
Kooshty logo | packaged in a natural kraft
Kooshty gift box

N\$274



COFFEE MUGS

SERENDIPIO BINARY STAINLESS STEEL VACUUM FLASK - 500ML

26 (h) cm | stainless steel | 500ml
not dishwasher and microwave
safe | double-wall vacuum stainless
steel construction | packaged in a
grey Serendipio gift box

N\$380



COFFEE MUGS

KOOSHTY CONGO STAINLESS STEEL VACUUM WATER BOTTLE - 600ML

25 (h) | 600ml | stainless steel,
silicone & bamboo | double wall
stainless steel vacuum bottle
keeps liquids cold or hot for
hours | bamboo lid finish |
includes tube gift box

N\$395



COFFEE MUGS

KOOSHTY WAIKIKI STAINLESS STEEL VACUUM TUMBLER – 800ML

24.7 (h) x 10 (d) cm | 800ml | food grade stainless steel & PP | stainless steel vacuum construction keeps liquids hot or cold for hours | powder-coated finish | sturdy and comfy swing handle | cup holder-friendly base | built-in straw | ensure the lid is securely closed and tightened when using | the mug can go into the dishwasher but not the lid | not microwave safe | packaged in a natural kraft Kooshty gift box



N\$420



COFFEE MUGS

KOOSHTY BIG KAHUNA STAINLESS STEEL VACUUM MUG – 1.2 LITRE

26 (h) x 10 (d) cm | food grade stainless steel, PP & silicone | 1.2 Litre | stainless steel vacuum construction keeps liquids hot or cold for hours | sturdy and comfy handle | cup holder-friendly base | left and right hand-friendly, 2-in-1 screw lid | reusable plastic straw | ensure lid is securely closed and tightened when using | not dishwasher safe, hand wash only | not microwave safe | packaged in a natural kraft Kooshty gift box

N\$505



zuri.media
BRAND COMMUNICATION & PR

COFFEE MUGS

ALEX VARGA AURELIAN STAINLESS STEEL 2-IN-1 VACUUM TUMBLER & STRAW

stainless steel & plastic | 20.5 (h) cm |
530ml | unique squared shape
enables larger laser branding of a logo
or message | 2 interchangeable lids
included: 1 sipper lid and 1 slider lid |
Alex Varga logo on EVA pad under the
bottle base | packaged in an Alex
Varga gift tube

N\$590



COFFEE MUGS

ALEX VARGA MAXIMUS STAINLESS STEEL VACUUM MUG – 1.2 LITRE

27 (h) x 10 (d) cm (excluding straw) | straw
length: 33.5 (l) cm | stainless steel, PP & silicone
| 1.2L / 1,200ml | powder-coated finish | dual
function, watertight, push-on lid | soft EVA base
| Alex Varga logo on EVA pad under the mug
base | packaged in an Alex Varga gift box



N\$590

COFFEE MUGS

ALEX VARGA BOREALIS STAINLESS STEEL VACUUM WATER BOTTLE – 700ML

26.3 (h) cm | food grade stainless steel | 700ml |
matte powder-coated and glossy gun metal
combination finish | because of the glossy finish
of the gun metal section, the colour of this bottle
may differ slightly from the picture. It looks
superb, but it's recommended to check a
physical sample before ordering | hand wash
recommended | packaged in an Alex Varga gift
tube

N\$655



COFFEE MUGS

ALEX VARGA VALHALLA STAINLESS STEEL VACUUM FLASK – 1 LITRE

33 (h) cm | stainless steel | 1 Litre

| double-wall vacuum stainless steel construction
subtle Alex Varga branding at the base | powder-coated matte-black finish | the lid of the flask also functions as a cup | Alex Varga logo tone-on-tone around the bottom of the flask | packaged in an Alex Varga gift tube



N\$760

Branding Techniques

Offering a choice of 23 branding techniques and the ability to combine multiple methods and locations on the same item, we're here to ensure a world-class experience when it comes to projecting the right image for your brand.

Our industry-leading turnaround times, vast capacity across all departments and an in-depth understanding of the complexity of branding provides you with the convenience and cost-savings associated with purchasing and branding product at one point.

Branding Pricing

Prices include single position branding in single colour. Other options and colour options are available on requested and will be added to an official quote

Lead Times

All orders are subject to a 7 - 10 working days delivery time from receipt of payment on orders. All artwork is required in high-quality vector



Exhibition catalogue

Botswana | Namibia
Zimbabwe

#vrzmb



zuri.media
BRAND COMMUNICATION & PR

Exhibition supplies

Altitude Jessie Pill Box

2 (h) x 6.8 (dia) | PP | four-chamber pillbox
lid rotates to allow a small lift lid to dispense
tablets from one chamber only
bigger lid opens to refill all four chambers
transparent lid allowing visibility of contents

N\$20



zuri.media
BRAND COMMUNICATION & PR

Exhibition supplies

Altitude Aruba Ball Pen

black German Ink.



N\$25

www.zurimedia.com.na



*Available colours



zuri.media
BRAND COMMUNICATION & PR

Exhibition supplies

Altitude Basix Wooden Pencil

Sharpened wooden HB
pencil with eraser.

- 19cm

N\$25



*Available colours



zuri.media
BRAND COMMUNICATION & PR



Exhibition supplies

Altitude Muse Lip Balm

7 (h) x 1.9 (d) cm | ABS | 4.5g | vanilla
scented | bulk packed

N\$35

Exhibition supplies

Altitude Expert Lanyard Conference Pouch

Clear PVC | for maximum
card size 6cm x 9cm | 8cm
x 9.5cm | excludes lanyard

N\$35

www.zurimedia.com.na



*Available colours



zuri.media
BRAND COMMUNICATION & PR



*Available Colours

Exhibition supplies

Altitude Rhapsody Lanyard

90 (l) x 2 (w) | two-tone
velcro safety closure: also allows for
easy printing

N\$40



zuri.media
BRAND COMMUNICATION & PR

Exhibition supplies

Altitude Kwami Recycled Plastic Phone Stand

9 (l) x 3 (w) x 0.5 (h) cm | recycled plastic
& rubber | foldable | bulk packed

N\$42



Exhibition supplies

Altitude Yomega Yo-Yo

3.7 (h) x 5.5 (dia)
PS | bulk packed



*Available Colours

N\$45



zuri.media
BRAND COMMUNICATION & PR

Exhibition supplies

Altitude Snazzy Dual Phone Card Holder

9.9cm (l) x 5.8cm (w)
silicone
bulk packed

N\$45



*Available Colours

Exhibition supplies

Altitude Expo Non-Woven Shopper

42cm (h) x 38cm (l)

80g/m² non-woven fabric

N\$45



zuri.media
BRAND COMMUNICATION & PR



Exhibition supplies

Altitude Kلاس Retractable Badge Reel

A convenient and useful badge reel for most employees . Belt clip on back for added positioning of your badge. Can also be used as a key ring holder. Will look great with a full colour domed logo . ABS . 3.5 (dia) : retractable cord: 48 (l)

N\$45



*Available Colours

Exhibition supplies

Okiyo Reiko Ball Pen

bamboo, Aluminium & steel
bamboo lower barrel with aluminium
upper barrel and metal clip
black German ink
minimum 1,200 Metres writing distance

N\$45



*Available Colours

Exhibition supplies

Back-To-Nature Non-Woven Bag

40 (l) x 11 (w) x 32 (h) cm
80g/m² non-woven fabric | heat-
sealed | 11cm gusset

N\$46



Exhibition supplies

Altitude Safety Box Cutter

11.9cm (l) x 3.0cm (w) x 0.4cm (h)
ABS with steel blade | bulk packed

N\$47.50



zuri.media
BRAND COMMUNICATION & PR

Exhibition supplies

Altitude Surveyor
Tape Measure
Keyholder - 1 Metre

3.5cm x 3.5cm

N\$47.50



Exhibition supplies

Altitude Happy-Travels Car Vent Air Freshener

ABS - 3.9 (h) x 5.2 (dia)
bulk packed



N\$50

Exhibition supplies

Altitude Smile Stress Ball

PU | 6.3cm diameter | smiley face
design | bulk packed

N\$55



*Available colours

Exhibition supplies

Altitude Nifty Mini Notebook & Pen

10.5 (l) x 7 (w) x 1 (h) cm | paper and ABS
160 unlined pages (80 sheets) | includes
mini pen with black German ink



N\$55



zuri.media
BRAND COMMUNICATION & PR

Exhibition supplies

Altitude MacGyver Credit Card Multi-Tool

stainless steel: 6.8 (l) x 4.5 (w) x 0.25 (h)
simulated leather pouch 8 (l) x 5.7 (w)
bulk packed



N\$55

Exhibition supplies

Altitude Axial Phone Card Holder, Ring Grip & Phone Stand

8.8 (l) x 5.7 (w)
ABS & silicone
bulk packed

N\$55



zuri.media
BRAND COMMUNICATION & PR



Exhibition supplies

Altitude Construction Torch Keyholder

ABS | 4.8 (l) x 3.4 (w) x 2 (h)

3 x CR2032 button cell batteries
included | All torch keyholders have
white LED lights

N\$60



zuri.media
BRAND COMMUNICATION & PR

Exhibition supplies

Altitude Circuit USB Car Charger

FCC & CE certification



N\$65

Exhibition supplies

Altitude Terrace Bottle Opener

14.4 (l) x 2.8 (w) x 1.9 (h) cm
rubberwood & steel
bulk packed

N\$70



Exhibition supplies

Okiyo Chikara Maxi Cotton Drawstring Pouch

26.5 (w) x 38 (h) | 220g/m² cotton



N\$85

Exhibition supplies

Burgundy Waiter's Corkscrew

stainless steel & PP | closed: 13.5 (l) x
4 (w) | open: 18.5 (l) x 4 (w)
packaged in a gift box

N\$90



Exhibition supplies

Altitude Taylor Stationery Set

100% recycled materials | Bamboo
Eco-friendly

N\$90



Exhibition supplies

Altitude Central Stationery Set

19 (l) x 10 (h) cm | pencil case: 600D
material 15cm plastic ruler | ball pen:
black German ink pencil: HB lead
sharpener | eraser | bulk packed

N\$90

www.zurimedia.com.na



*Available colours



zuri.media
BRAND COMMUNICATION & PR

Exhibition supplies

Altitude Community Stationery Set

34 (l) x 12 (h) cm | pencil case: 600D
material | 30cm plastic ruler
ball pen: black German ink | pencil:
HB lead | sharpener | eraser | bulk
packed

N\$90



Exhibition supplies

Altitude Academy Stationery Set

Case: 19 (l) x 15 (w)

600D | ball pen: contains black German-manufactured ink pencil: 16 (l) | linden wood | supplied sharpened | 15cm ruler: plastic | sharpener: 2.5 (l) x 1.5 (w) x 1.05 (h) | PS & steel | eraser: 2.5 (l) x 1.5 (w) x 0.5 (h) | synthetic rubber

N\$140



zuri.media
BRAND COMMUNICATION & PR



*Available colours

Exhibition supplies

Altitude Merritt Notebook & Pen Set

Altitude Bardsley A5 Soft Cover Notebook

21 (l) x 14 (w) x 0.5 (h) cm | Paper
80 lined pages (40 sheets) | cover made
from natural, recyclable kraft paper

Altitude Tickit Recycled Plastic & Bamboo Ball Pen

recycled ABS plastic & bamboo | glossy
finish barrel and clip, with bamboo
pusher | recycled logo on the back of
the barrel | black German ink minimum
800 Metres writing distance

N\$180



*Available colours

Branding Techniques

Offering a choice of 23 branding techniques and the ability to combine multiple methods and locations on the same item, we're here to ensure a world-class experience when it comes to projecting the right image for your brand.

Our industry-leading turnaround times, vast capacity across all departments and an in-depth understanding of the complexity of branding provides you with the convenience and cost-savings associated with purchasing and branding product at one point.



Branding Pricing

We work off your design. If we must do the graphic design, an additional graphic design fee will be levied at a rate of **N\$450 / hour**

Lead Times

All orders are subject to a 10 - 14 working days delivery time from receipt of payment on orders. All artwork is required in high-quality vector





Exhibition supplies

Champion Layflat PVC X-Banner 60cm x 160cm

weight: 2kg | 1 x frame: steel & fibre glass
assembled size: 0.60 x 1.6 x 0.80m | bag: nylon
size: 112 x 15cm | pvc banner skin included •
layflat pvc • visual size: 0.60 x 1.6m • must be
rolled into carry bag to avoid creasing | quick &
easy assembly champion range.

N\$760

Exhibition supplies

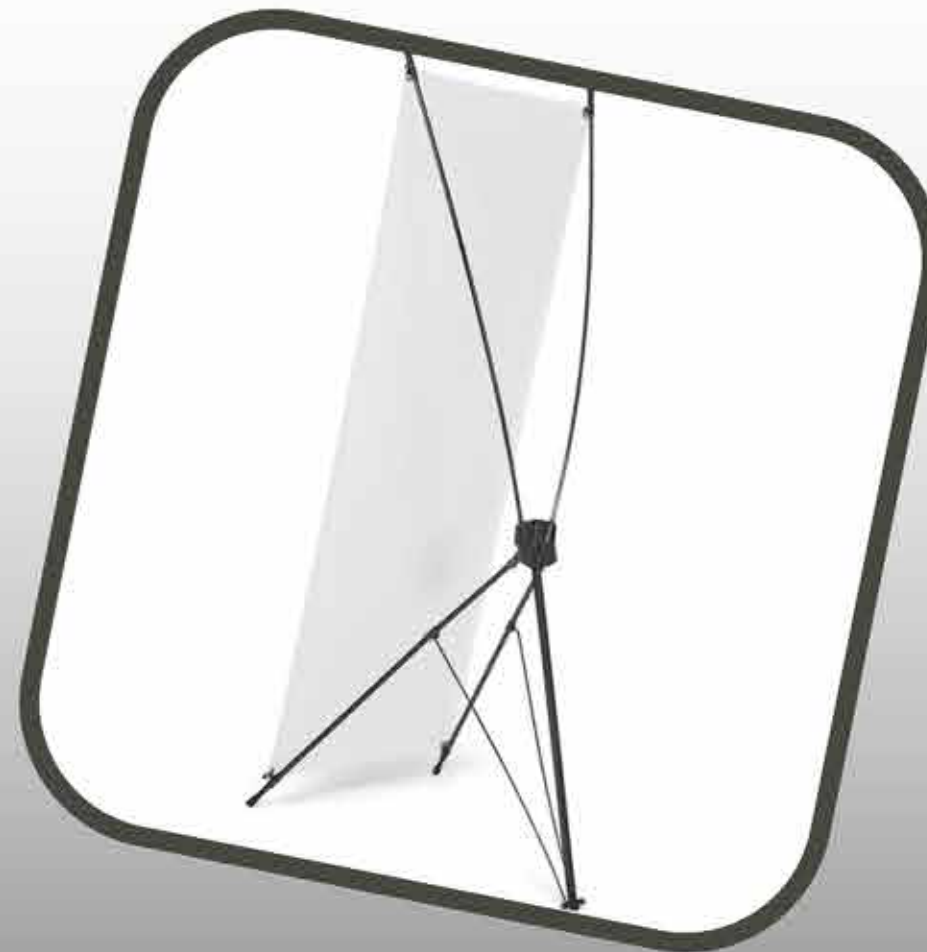
Champion fabric PVC X-Banner 60cm x 160cm

weight: 2kg | 1 x frame: steel & fibre glass
assembled size: 0.60 x 1.6 x 0.80m
bag: nylon • size: 112 x 15cm | gazebo display
fabric | visual size: 0.60 x 1.6m • must be
rolled into carry bag to avoid creasing
quick & easy assembly | champion range.

N\$824.99



zuri.media
BRAND COMMUNICATION & PR



Exhibition supplies

Champion Layflat PVC X-Banner 80cm x 180cm

weight: 2.25kg | 1 x frame: steel & fibre glass •
assembled size: 0.80 x 1.8 x 0.87m | bag: nylon • size:
123 x 17cm | pvc banner skin included • layflat pvc •
visual size: 0.80 x 1.8m • must be rolled into carry bag
to avoid creasing | quick & easy assembly
champion range

N\$910.99



zuri.media
BRAND COMMUNICATION & PR



Exhibition supplies

Legend Fabric Table Cloth 2 x 1m

weight: 0.51kg | material: polyester display fabric | size: 2 x 1m | features: durable, lightweight, washable, hemmed | branding: single-sided sublimation

N\$980



zuri.media
BRAND COMMUNICATION & PR



Exhibition supplies

Champion Fabric Pull Up Banner

weight: 2.9kg | 1 x frame: Aluminium
assembled size: 0.85 x 2 x 0.1m | bag:
polyester oxford • size: 90 x 8 x 8cm
fabric: 240gsm polyester | banner skin
included • polyester display fabric • visual
size: 0.85 x 2m

N\$1,450

Exhibition supplies

Coated Steel Directors Chair

powder-coated steel directors chair with padded backrest, seat, and arms. | Weight: 3.39kg
dimensions: chair folded/closed – 77 x 84 x 14cm
backrest dimensions – 62 x 18 cm | seat dimensions – 49 x 32cm

N\$1,500





Exhibition supplies

Champion Layflat Pull Up Banner

weight: 2.9kg | 1 x frame: Aluminium

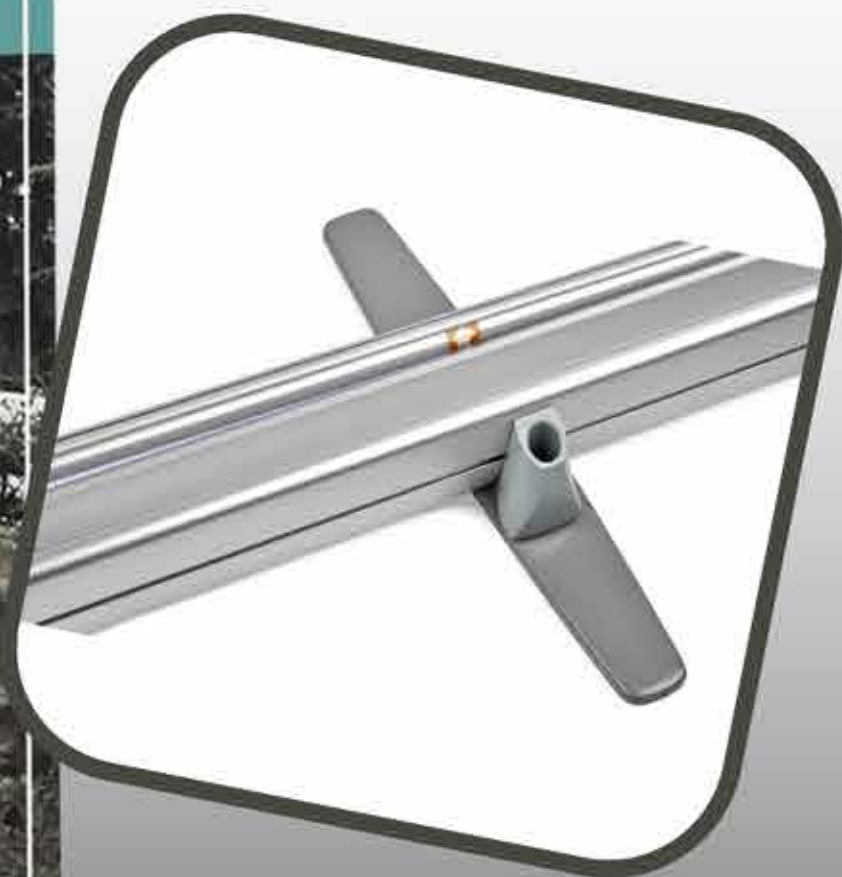
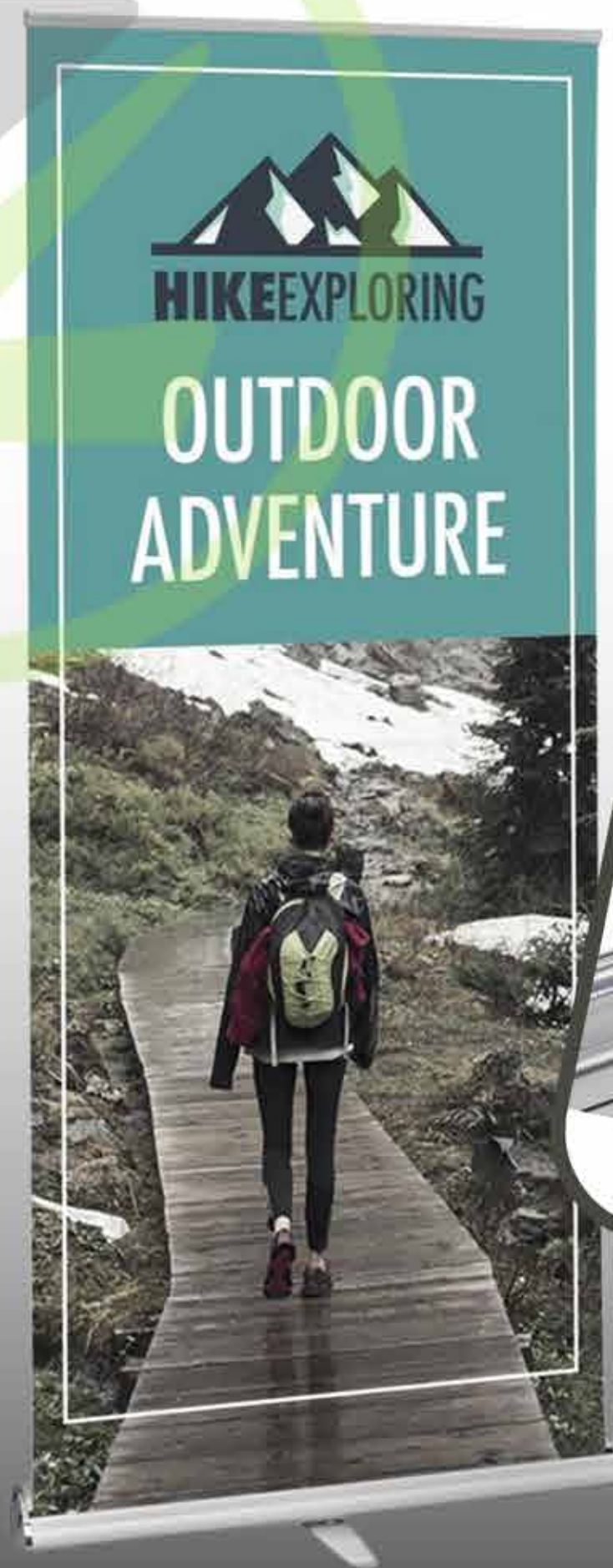
assembled size: 0.85 x 2 x 0.1m

bag: polyester oxford • size: 90 x 8 x 8cm

PVC banner skin included • Layflat PVC

visual size: 0.85 x 2m

N\$1,570



Exhibition supplies

Legend Layflat Pull Up Banner

weight: 4.5kg | 1 x frame: aluminium • assembled
size: 0.85 x 2 x 0.1m • frame folds up easily to fit
into carry bag | bag: polyester oxford • size: 90 x
12 x 13cm | 1 x banner skin included • layflat PVC •
visual size: 0.85 x 2m

N\$1,740

Exhibition supplies

Legend Fabric Pull Up Banner

weight: 4.5kg | 1 x frame: aluminium • assembled
size: 0.85 x 2 x 0.1m • frame folds up easily to fit into
carry bag | bag: polyester oxford • size: 90 x 12 x 13cm
fabric: 240gsm polyester | 1 x banner skin included •
polyester display fabric • visual size: 0.85 x 2m

N\$1,840



zuri.media
BRAND COMMUNICATION & PR



Exhibition supplies

Champion PVC Table Cloth 3.5 x 1.25m

weight: 0.55kg | material: 280g/m²
blockout PVC size: 3.5 x 1.25m
features: durable, lightweight, wipe-
down, knife-cut edge
champion range

N\$2,000



zuri.media
BRAND COMMUNICATION & PR



Exhibition supplies

Ovation Layflat Pull Up Banner

weight: 5kg | 1 x frame: aluminium •
assembled size: 0.85 x 2 x 0.2m • frame folds
up easily to fit into carry bag | bag: polyester
oxford • size: 92 x 10 x 21cm | 1 x banner skin
included • layflat PVC • visual size: 0.85 x 2m

N\$2,000



zuri.media
BRAND COMMUNICATION & PR



Exhibition supplies

Champion Spandex Stretch Slip-Over Tablecloth

weight: 1.4kg | material: polyester spandex
size: tailored to fit a standard trestle table:
1.83 x 0.76 x 0.75m | features: fitted table
cloth, durable, lightweight, washable,
hemmed | championship range

N\$2,008



zuri.media
BRAND COMMUNICATION & PR



Exhibition supplies

Ovation Fabric Slip Over Table Cloth

weight: 1.8kg | material: polyester display
fabric | size: tailored to fit a standard trestle
table: 1.83 x 0.76 x 0.75m | features: fitted
table cloth, durable, washable, hemmed
Ovation range

N\$3,154.78



zuri.media
BRAND COMMUNICATION & PR





Exhibition supplies

Champion Fabric Pull Up Banner D/Sided incl Kit

Weight: 5.8kg | 2 x frames: Aluminium
Frame assembled size: 0.85 x 2 x 0.2m
2 interlocking mechanisms, positioned
back to back

N\$3,260

Exhibition supplies

Collapsible Fabric Tube Counter

full colour digital dye-sublimation print onto
230g/m² | polyester display fabric finished
with zip and silicone beading top and bottom
weight: 8.5kg | frame material: modular
aluminium frame

N\$3,299



zuri.media
BRAND COMMUNICATION & PR



Exhibition supplies

Pop Up Fabric Counter

full colour digital dye-sublimation
print onto 230g/m2 | polyester display
fabric finished with female velcro all
around | weight: 9.3kg frame material:
aluminium frame

N\$3,700



zuri.media
BRAND COMMUNICATION & PR

ENQUIRE ABOUT OUR EXCITING
**SUMMER TRAVEL
PACKAGES**


TRAVEL
AGENCY



Exhibition supplies

Legend 2M Sublimated Sharkfin Double-Sided Flying Banner - 1 complete unit

Weight: 2kg | 2 x poles: aluminium •
assembled size: 2m | accessories: 2 x rods:
fibre • 1 x ground spike: steel | bag:
polyester oxford • size: 137 x 18cm • carry
bag included | 1 x banner skin included •
polyester warp knit • visual size: 0.98 x
2.24m • anti-fray | legend range

N\$1,372



Exhibition supplies

Legend 2M Sublimated Arcfin Double-Sided Flying Banner - 1 complete unit

Weight: 2kg | 2 x poles: aluminium •
assembled size: 2m | accessories: 2 x rods:
fibre • 1 x ground spike: steel | bag:
polyester oxford • size: 137 x 18cm • carry
bag included | 1 x banner skin included •
polyester warp knit • visual size: 0.61 x 2.59m
• anti-fray | legend range

N\$1,372



Exhibition supplies

Legend 3M Sublimated Telescopic Double-Sided Flying Banner - 1 complete unit

Weight: 2.4kg | 3 x poles & 1 arm: aluminium •
assembled size: 3m | accessories: 1 x ground spike:
steel | bag: polyester oxford • size: 137 x 18cm •
carry bag included | 1 x banner skin included •
polyester warp knit • visual size: 0.7 x 2.5m • anti-
fray | legend range

N\$1,742



Exhibition supplies

Legend 2m Telescopic Flying Banner (Set of 2)

Sold in sets of 2, info below is per unit
weight: 1.8kg | 2 x poles & 1 arm: aluminium •
assembled size: 2m accessories: 1 x ground
spike: steel | bag: polyester oxford • size: 137 x
18cm | 1 x banner skin included • polyester
warp knit • visual size: 0.7 x 1.8m • anti-fray |
legend range

N\$1,807



Exhibition supplies

Legend 2m Arcfin Flying Banner (Set of 2)

Sold in sets of 2, info below is per unit
weight: 1.5kg | 2 x poles: aluminium •
assembled size: 2m | accessories: 2 x rods:
fibre • 1 x ground spike: steel | bag:
polyester oxford • size: 137 x 18cm • carry
bag include | 1 x banner skin included •
polyester warp knit • visual size: 0.61 x
2.59m • anti-fray | legend range

N\$1,807



Exhibition supplies

Legend 2m Sharkfin Flying Banner (Set of 2)

Sold in sets of 2, info below is per unit |
weight: 1.4kg | 2 x poles: aluminium •
assembled size: 2m | accessories: 2 x
rods: fibre • 1 x ground spike: steel | bag:
polyester oxford • size: 137 x 18cm • carry
bag included | 1 x banner skin included
• polyester warp knit • visual size: 0.98 x
2.24m • anti-fray | legend range

N\$1,852

Exhibition supplies

Legend Curved Banner

Wall 1.4m x 2.25m

weight: 16.4kg | 1 x frame: aluminium •
assembled size: 4.2 x 2.25 x 0.3m | bag:
polyester oxford • size: 82 x 25 x 50cm

N\$3,900



zuri.media
BRAND COMMUNICATION & PR





Exhibition supplies

Legend Straight Banner Wall 1.52m x 2.25m

weight: 6.9kg | 1 x frame: aluminium •
assembled size: 1.52 x 2.25 x 0.3m | bag:
polyester oxford • size: 85 x 29 x 24cm •
carry bag included | 1 x banner skin
included

N\$4,679



Exhibition supplies

Double Sided Fabric Tube System 1.2m

Full colour digital dye-sublimation
print onto 230g/m2 | polyester display
fabric joined and hemmed for
strength

N\$4,999.99



zuri.media
BRAND COMMUNICATION & PR



Exhibition supplies

Double Sided Fabric Tube System 1.5m

full colour digital dye-sublimation
print onto 230g/m² | polyester display
Fabric joined and hemmed for
strength

N\$5,199.99



Exhibition supplies

Ovation Sublimated Gazebo 1.5m x 1.5m

weight: 6.5kg | hardware: 1 x frame:
aluminium, assembled size: 1.5 x 1.5m,
quick assembly, portable | bag
included: polyester oxford, size: 158 X2 8
X 43cm, webbing handles

N\$5,800



Exhibition supplies

Ovation Sublimated Gazebo 1m X 1m Kiosk - 3 Half-Wall Skins

weight: 10.83kg | hardware: 1 x frame:
aluminium • assembled size: 1 x 1m • quick
assembly • portable table: ABS top with
aluminium supports 100 x 29 x 3cm | bag
included: polyester oxford • size: 123 x 18 x 18cm
fabric: polyester gazebo fabric • fitted 600D
water head

N\$5,800



Exhibition supplies

Legend Straight Banner Wall 3m x 2.25m

weight: 11.2kg | 1 x frame: aluminium •
assembled size: 3 x 2.25 x 0.3m | bag:
polyester oxford • size: 85 x 29 x 27cm •
carry bag included | 1 x banner skin
included • polyester display fabric • visual
size: 3 x 2.25m • durable fabric

N\$6,800



zuri.media
BRAND COMMUNICATION & PR



Exhibition supplies

Legend Straight Banner Wall 3.7m x 2.25m

weight: 13.9kg | 1 x frame: aluminium
assembled size: 3.7 x 2.25 x 0.3m | bag:
polyester oxford • size: 85 x 29 x 50cm • carry
bag included | 1 x banner skin included •
polyester display fabric • visual size: 3.7 x
2.25m

N\$9,150.99

Exhibition supplies

Ovation Sublimated Gazebo 2m X 2m - 1 Full-Wall Skin

weight: 10.83kg | hardware: 1 x frame:
aluminium assembled size: 1 x 1m • quick
assembly • portable | table: ABS top with
aluminium supports 100 x 29 x 3cm
bag included: polyester oxford • size: 123 x 18 x
18cm

N\$10,180



zuri.media
BRAND COMMUNICATION & PR



Exhibition supplies

Legend Straight Banner Wall 4.45m x 2.25m

weight: 15.5kg | 1 x frame: aluminium •
assembled size: 4.45 x 2.25 x 0.3m | bag:
polyester oxford • size: 85 x 29 x 50cm •
carry bag included 1 x banner skin
included

N\$10,350



zuri.media
BRAND COMMUNICATION & PR



Exhibition supplies

Legend Curved Banner Wall 4.2m x 2.25m

weight: 8kg | 1 x frame: aluminium •

assembled size: 1.45 x 2.25 x 0.3m

bag: polyester oxford • size: 85 x 24 x 27cm •

carry bag included | 1 x banner skin included •

polyester display fabric • visual size: 1.45 x
2.25m • durable fabric | legend range



N\$10,995.25

Exhibition supplies

Ovation Sublimated Gazebo 2m X 2m - 2 Full-Wall Skins

weight: 12.2kg | hardware: 1 x frame:
aluminium, assembled size: 2 x 2m, quick
assembly, portable | slip over bag included:
polyester oxford, size: 158 x 28 x 28cm,
webbing handles (also sold individually as
disbag-2040) • collapsible gazebo fits easily
into carry bag

N\$11,000



zuri.media
BRAND COMMUNICATION & PR



Exhibition supplies

Legend Double-Sided Straight Banner Wall 4.45m x 2.25m

weight: 15.6kg | 1 x frame: aluminium •
assembled size: 4.45 x 2.25 x 0.3m | bag:
polyester oxford • size: 85 x 29 x 50cm •
carry bag included

N\$13,600



zuri.media
BRAND COMMUNICATION & PR



Exhibition supplies

Coated Steel Sublimated Gazebo 6m x 3m

weight: 33kg | hardware: 1 x frame:
coated steel, assembled size: 6 x 3m,
quick assembly, portable bag included:
polyester oxford, size: 158 x 28 x 43cm,
webbing handles (also sold individually
as GZ-AM-64-D) • collapsible gazebo fits
easily into carry bag.

N\$18,290



zuri.media
BRAND COMMUNICATION & PR



Exhibition supplies

Coated Steel Sublimated Gazebo 6m x 3m, 2 short half -wall skins

weight: 34.67kg | hardware: 1 x frame: coated steel, assembled size: 6 x 3m, quick assembly, portable | bag included: polyester oxford, size: 158 x 28 x 43cm, webbing handles (also sold individually as GZ-AM-64-D) • collapsible gazebo fits easily into carry bag

www.zurimedia.com.na



N\$19,770



zuri.media
BRAND COMMUNICATION & PR

Exhibition supplies



Coated Steel Sublimated Gazebo 6m x 3m, 1 short full -wall skin

weight: 34.55kg | hardware: 1 x frame: coated steel, assembled size: 6 x 3m, quick assembly, portable | bag included: polyester oxford, size: 158 x 28 x 43cm, webbing handles (also sold individually as GZ-AM-64-D) • collapsible gazebo fits easily into carry bag.



N\$19,900



zuri.media
BRAND COMMUNICATION & PR

Exhibition supplies

Coated Steel Sublimated Gazebo

6m x 3m, 1 long full -wall skin

weight: 34.55kg | hardware: 1 x frame: coated steel, assembled size: 6 x 3m, quick assembly, portable bag included: polyester oxford, size: 158 x 28 x 43cm, webbing handles (also sold individually as GZ-AM-64-D) • collapsible gazebo fits easily into carry bag.

N\$20,900



Exhibition supplies

Marketing Indoor Display Kit

Ideal for trade shows, expos, and brand activation. set includes:

- x 2 Ovation Pull Up Banners with PVC Skin and Bag
- x 1 Legend Fabric Tablecloth 2.5m x 1.5 m
- x 1 Coated Steel Directors Chair

N\$6,047



zuri.media
BRAND COMMUNICATION & PR



Exhibition supplies

Sports Day Outdoor Display Kit

Ideal for school sports days and community parks. Perfect for organised events, directing participants, and boosting school spirit or hosting local sporting events, charity runs, and check-in areas.

Set includes:

- x 1 Ovation Aluminium 3 x 3m Gazebo (Toolkit and Bag included)
- x 1 Ovation Spandex Stretch Slip Over Tablecloth
- x 1 Set of 2 Legend 3m Sharkfin Flying Banners (Ground Spike included)
- x 1 Coated Steel Directors Chair

N\$14,294



zuri.media
BRAND COMMUNICATION & PR



Exhibition supplies

Golfers Outdoor Display Kit

Ideal for corporate golf days. Perfect for employee engagement, networking, and recognising sponsors.

Set includes:

- x 1 Ovation Coated Steel 3 x 3m Gazebo (Toolkit and Bag included)
- x 2 Coated Steel Directors Chair
- x 1 Set of 2 Legend 3m Sharkfin Flying Banners (Ground Spike included)

N\$15,100



zuri.media
BRAND COMMUNICATION & PR

Exhibition supplies

Athletics Outdoor Display Kit

Ideal for school events, athletics days, and park runs. Perfect for promoting your brand at events that encourage fitness, while having fun.

Set includes:

- x 1 Ovation Coated Steel 3 x 3m Gazebo (Toolkit and Bag included)
- x 1 Legend Fabric Tablecloth 2.5 m x 1.5 m
- x 2 Legend Fabric Pop-Ups Fabric (Bags included)
- x 1 Coated Steel Directors Chair

N\$16,640



Branding Techniques

Offering a choice of 23 branding techniques and the ability to combine multiple methods and locations on the same item, we're here to ensure a world-class experience when it comes to projecting the right image for your brand.

Our industry-leading turnaround times, vast capacity across all departments and an in-depth understanding of the complexity of branding provides you with the convenience and cost-savings associated with purchasing and branding product at one point.



Branding Pricing

We work off your design. If we must do the graphic design, an additional graphic design fee will be levied at a rate of **N\$450 / hour**

Lead Times

All orders are subject to a 10 - 14 working days delivery time from receipt of payment on orders. All artwork is required in high-quality vector





zuri.media

BRAND COMMUNICATION & PR

Unit 8 , 2nd Floor, Atlas House , 177 Sam Nujoma Ave, Windhoek

Tel: 061 236 869 | Cell : 081 200 0412|

E-mail: ask@zurimedia.com.na | Website: www.zurimedia.com.na

Hashtag: [vrzmb](#)